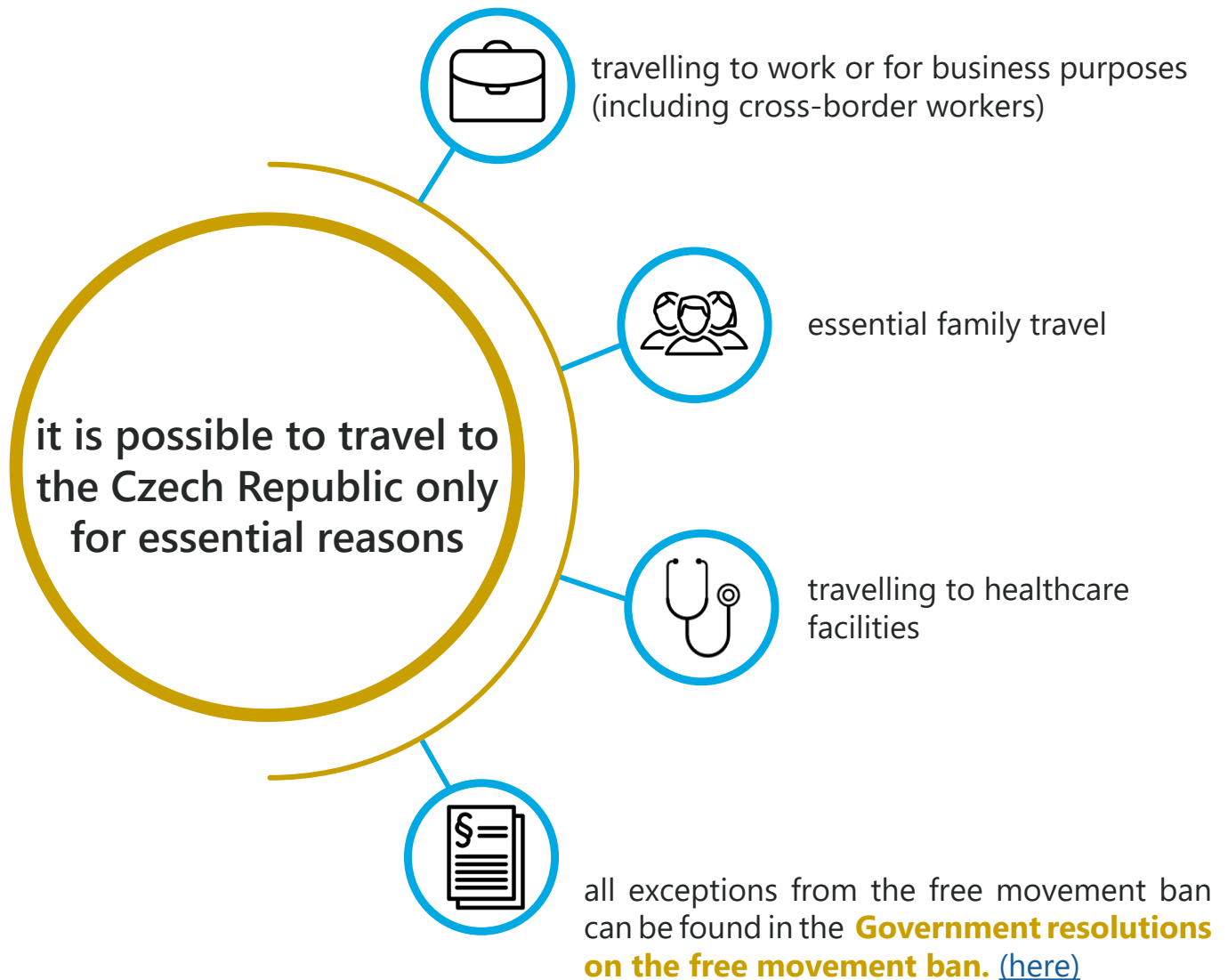


# Restriction on the entry of foreigners to the Czech Republic

On 21 October 2020 the ban to the free movement of all persons in the territory of the Czech Republic came into the effect.



As a result of the crisis measures issued by the Government of the Czech Republic **it is not possible to travel to CZE for the purpose of tourism or visiting friends.**

Other conditions for entry into the Czech Republic are defined by the Ministry of Health ([here](#)).