

1. Understand Your Security Specifics

- who/what are you protecting
- against who/what are you setting up protection
- what are your strengths/weaknesses

2. Be Methodical

- every adopted security measure must address an identified threat
- decide who will be responsible for implementing security measures
- provide training and check the functionality of security measures

3. Focus Primarily on Prevention and Mitigation of Impact

- focus on preventing attacks
- try to detect threats in advance
- try to mitigate the impact of attacks

4. Engage Local Staff

- they can help implement preventive security measures
- they can report suspicious activity
- they can help mitigate impact (see no. 6)

5. Stick to Standard Procedures

- evacuate
- lock-down
- if possible, build a safe-haven

10 PRINCIPLES OF SOFT TARGET HARDENING

VOCABULARY



LOCK-DOWN



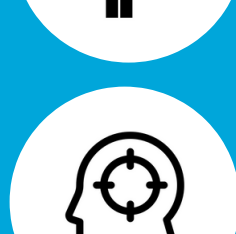
SAFE HAVEN



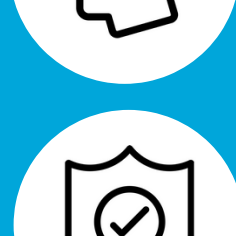
RUN



HIDE



FIGHT



SOFT TARGET



HARDENING

More info in the Basics of Soft Target Protection
Guidelines (str. 22) at www.mvcr.cz

CC icons: Vectors Market, Richards Gromuls, Gregor Cresnar, Luis Prado, Magicon,
Gregor Cresnar, Creative Stall @ thenounproject.com

6. Set Up a Coordination Plan for Your Management

- set a procedure according to a pre-approved plan, it will help mitigate mistakes caused by stress
- divide the tasks from the pre-approved plan among several people
- designate a coordinator and a means of communication

7. Raise Security Awareness

- provide training at least once a year
- acquaint yourself with likely scenarios
- practice procedures (see no. 5)

8. Cooperate with Your Local Police Dept. and Other IRS Services

- offer to give a tour of the premises
- involve them in the preparation of events where security is relevant
- inform them of suspicious activity and security incidents

9. During Entry Checks, Focus on Detecting Harmful Intent

- it is not just about finding weapons
- apply methods for the detection of suspicious behaviour
- carry out security interviews

10. Take the Surroundings of the Soft Target into Account

- be aware of your surroundings
- create communication channels with adjacent soft targets
- share information with them

<http://www.mvcr.cz/cthh/clanek/terorismus-web-dokumenty-dokumenty.aspx>



CENTRE AGAINST TERRORISM
AND HYBRID THREATS



10 PRINCIPLES OF SOFT TARGET HARDENING