

Ethical, Legal and Social Implications of First Response in Disasters

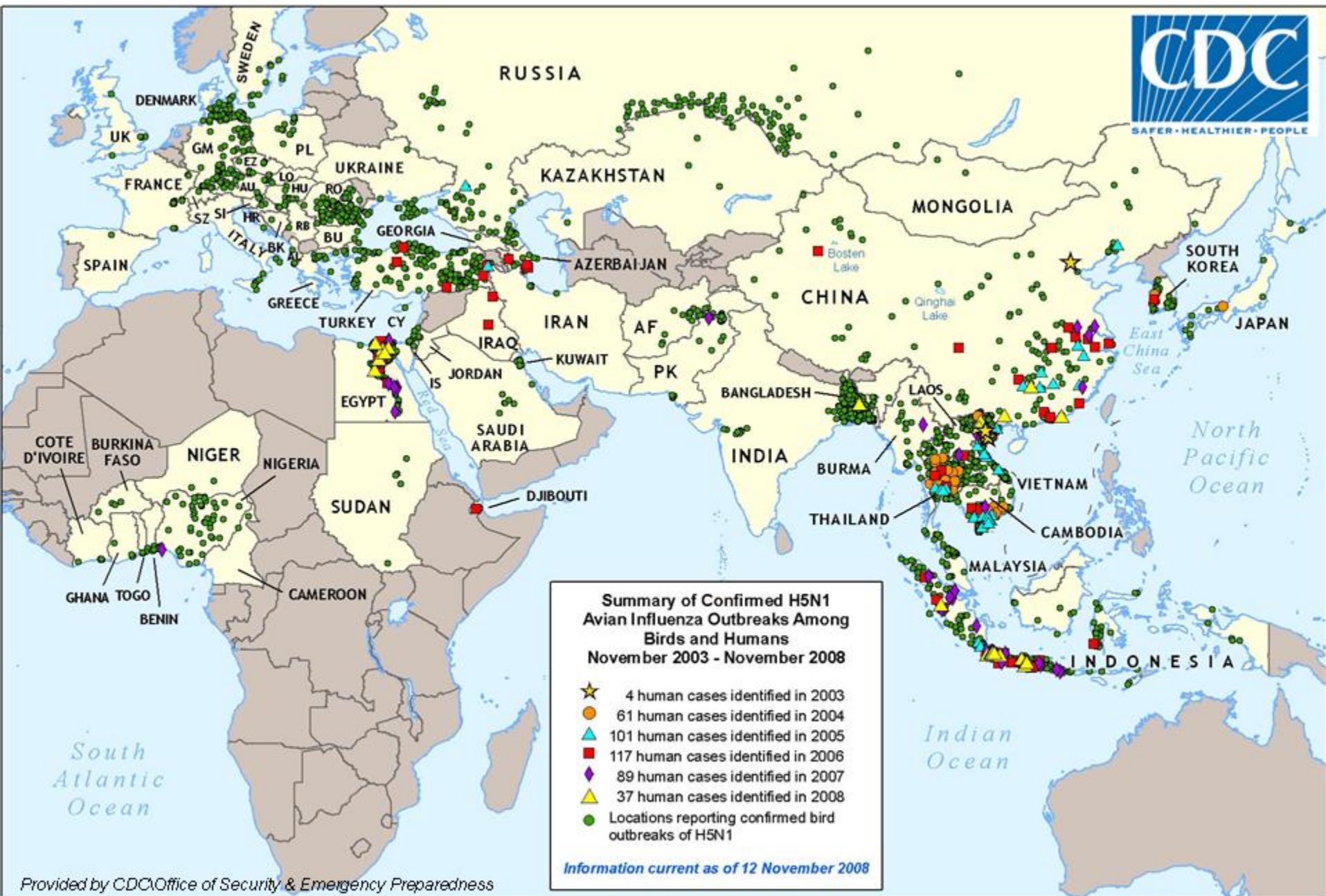
Rome, 11-12 December 2008

Pandemic Influenza: Special Considerations for First Responders

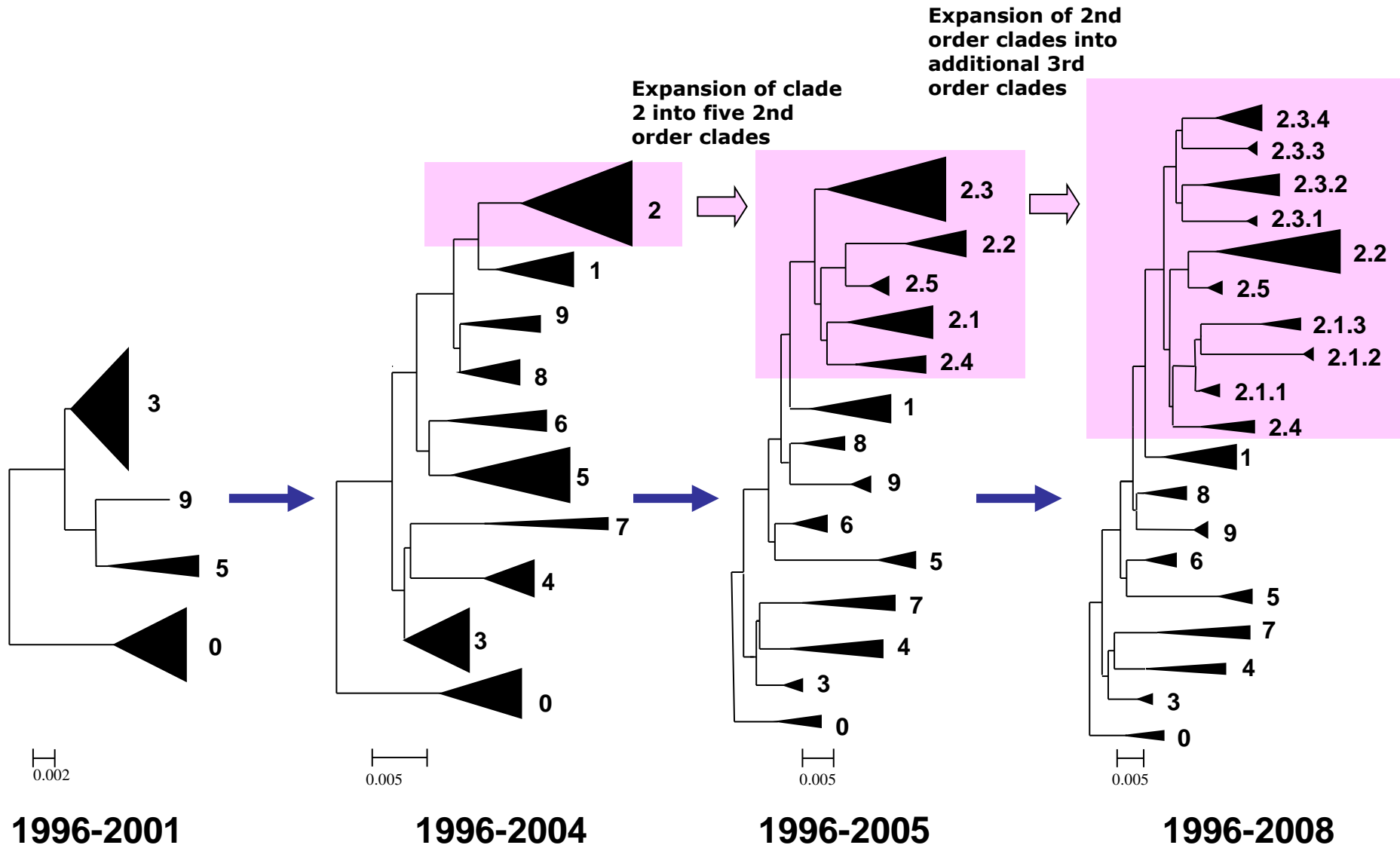
Toby L Merlin, MD

**Deputy Director, Influenza Coordination Unit
US Centers for Disease Control and Prevention**





Evolution of the H5 hemagglutinin (Clade 2): 1996-2008



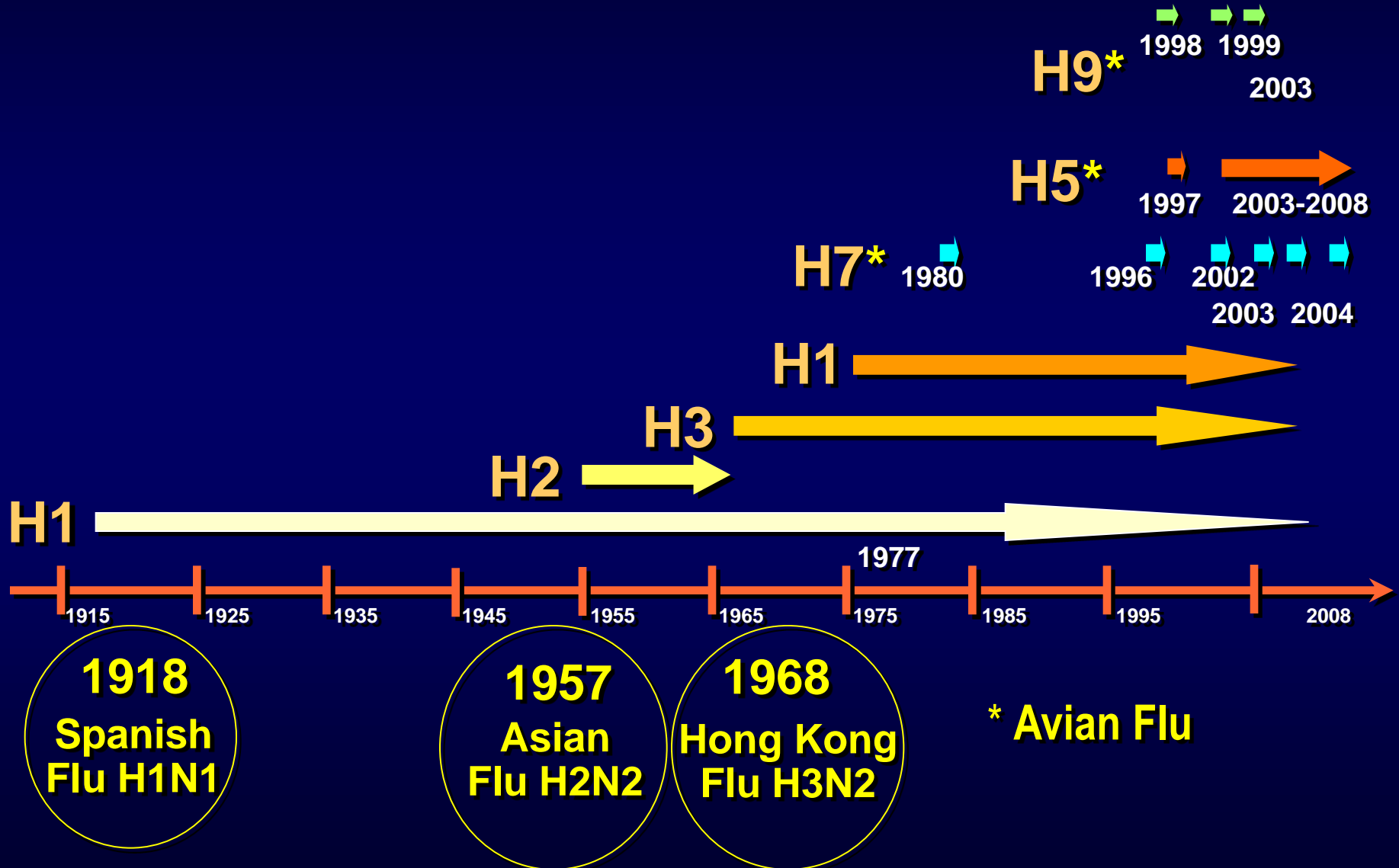
1996-2001

1996-2004

1996-2005

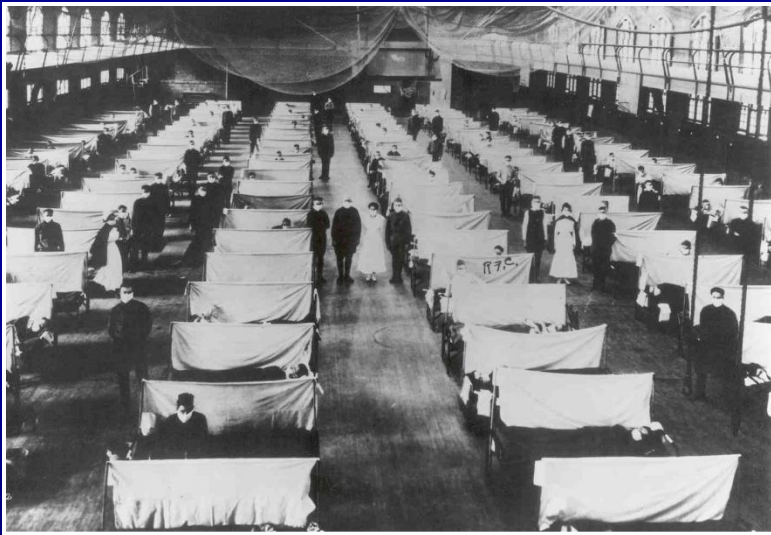
1996-2008

Emergence of Influenza A Viruses in Humans



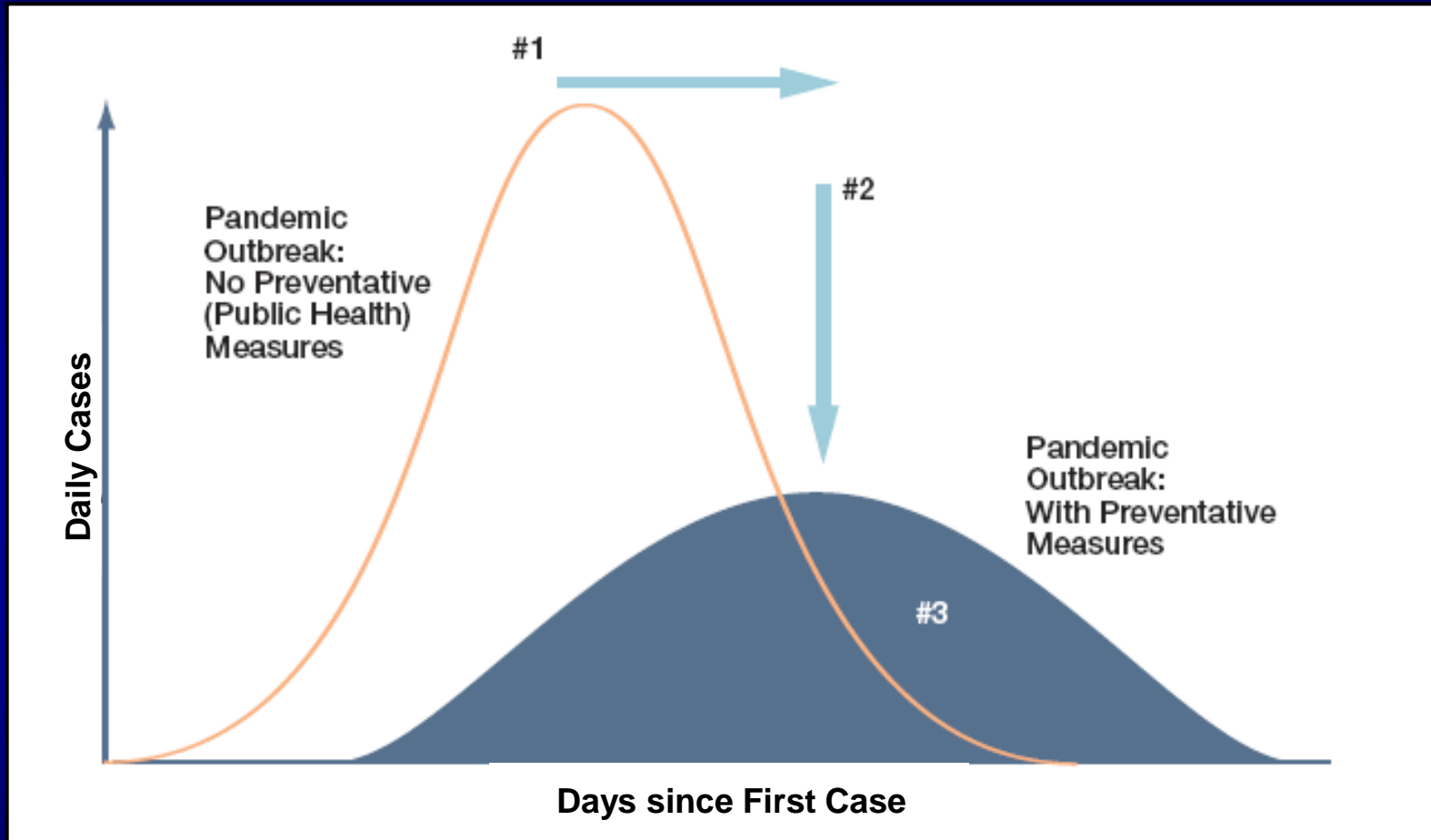
Impact of Next Pandemic

**If an influenza pandemic like
1918-20 occurred today:**



- **62 million people would die worldwide**
- **96% of deaths in developing world**
- **Highest deaths among 15-29 year olds**

Goals of Pandemic Mitigation



Pandemic Influenza Special Considerations for First Responders in US Government Planning:

- **Ethical principles**
- **Occupational risk**
- **Antiviral medication**
- **Pandemic vaccine**
- **Planning and coordination (Emergency Medical Services checklist)**



Ethical Principles

Principal of Preserving Function of Society

- **Minimizing the harms of an influenza pandemic may require targeting resources to specific groups that protect health and safety and provide essential community services.**
- **Targeting limited resources to protect societal interests is ethically appropriate.**

Ethical Guidelines in Pandemic Influenza - Recommendations of the Ethics Subcommittee of the Advisory Committee to the Director, Centers for Disease Control and Prevention. February, 2007



Ethical Principles

Principle of Reciprocity

- **Workers who assume increased risks due to their occupation and who provide benefits broadly to society – such as healthcare workers, firefighters, emergency medical services personnel, etc. – should be protected, if possible.**
- **Society has an obligation to provide health workers with the protection and tools they need.**



Ethical Guidelines in Pandemic Influenza - Recommendations of the Ethics Subcommittee of the Advisory Committee to the Director, Centers for Disease Control and Prevention. February, 2007



Ethical Principles

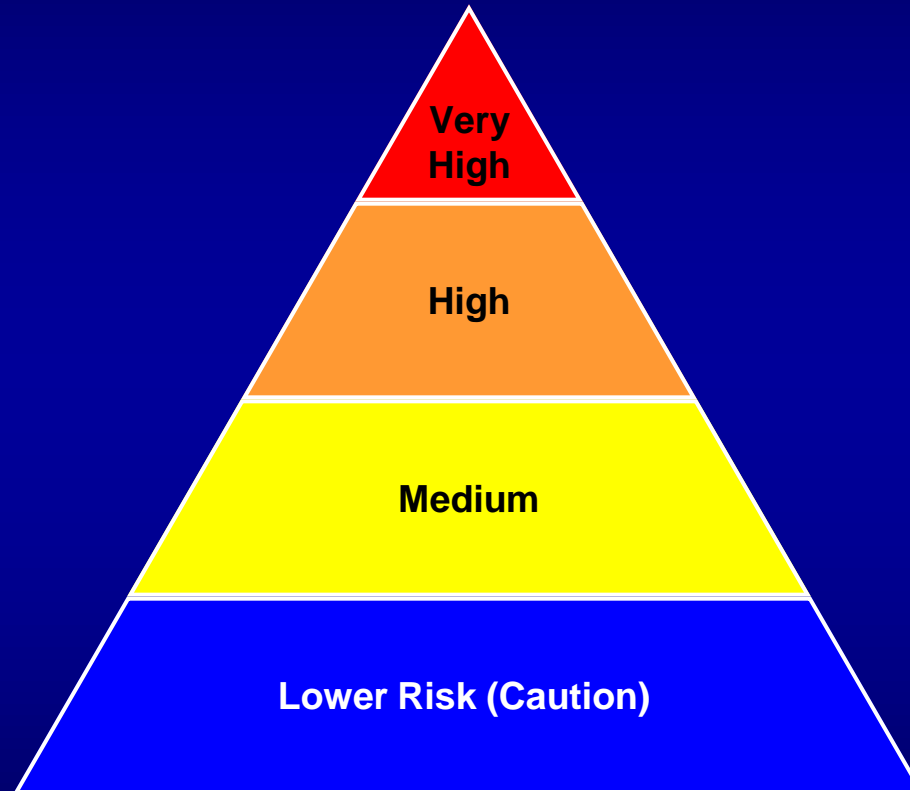
Professional Responsibility

- **Confronting some degree of personal risk comes with the job of being a health professional or first responder. They have an ethical contract with society at large.**

Reference: White paper prepared for the Centers for Disease Control and Prevention. Ethics Subcommittee of the Advisory Committee to the Director.



Occupational Risk Pyramid for Pandemic Influenza



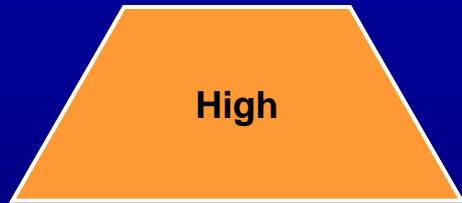
Reference: US Occupational Safety and Health Administration



Occupational Risk Pyramid for Pandemic Influenza



- **Performing aerosol-generating procedures**



- **Entering rooms of suspect patients**
- **Transporting suspect patients in closed vehicle**
- **Performing autopsies on suspect patients**



Reference: US Occupational Safety and Health Administration



Personal Protective Equipment



- **N95 (or higher) respirators during direct contact with pandemic influenza patients**



- **Surgical masks if N95 respirators not available**
- **Use of surgical masks for “source control” of symptomatic persons**
- **Gloves, eye protection, gowns**



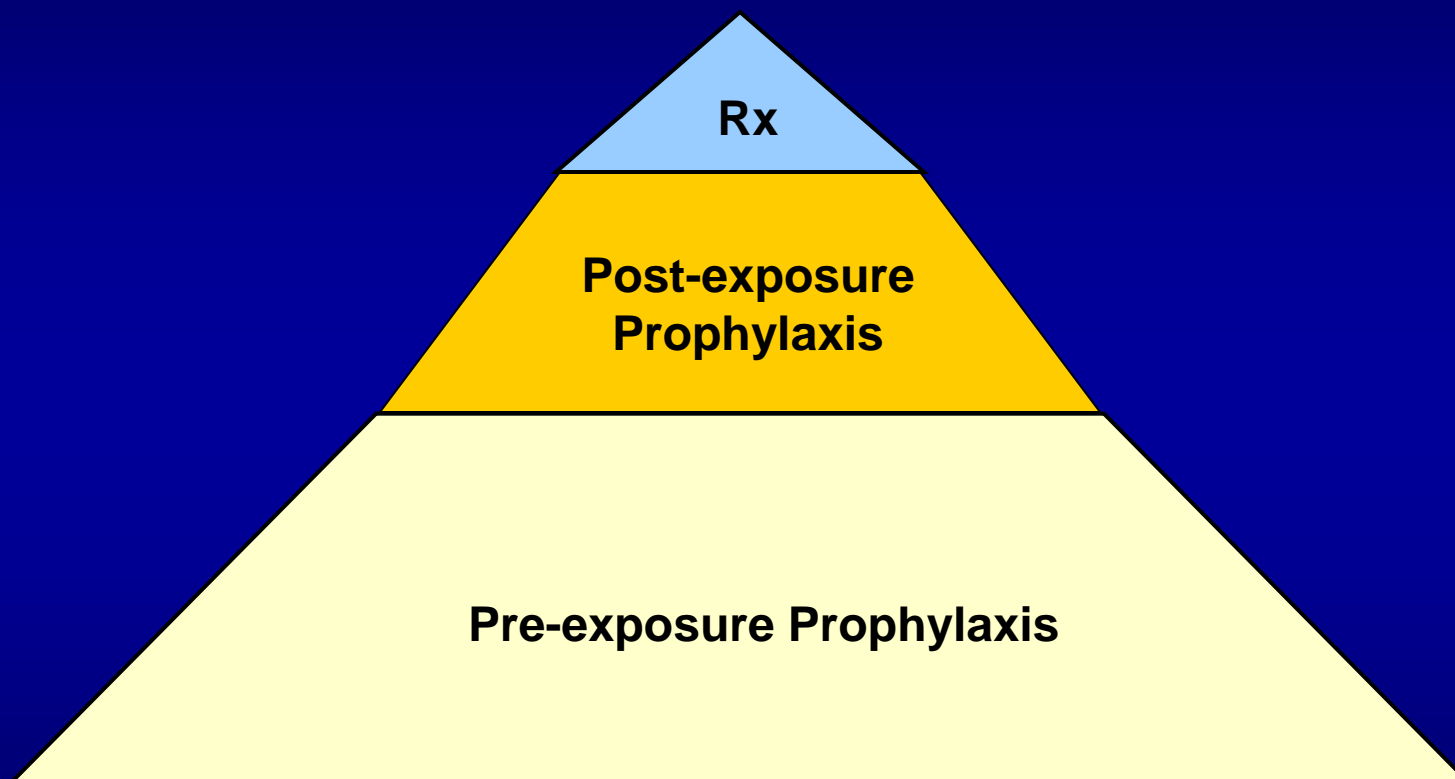
Interim Guidance on Planning for the Use of Surgical Masks and Respirators in Health Care Setting during and Influenza Pandemic. October 2006. www.pandemicflu.gov
Guidance on Preparing Workplaces for an Influenza Pandemic. OSHA 2007.
www.pandemicflu.gov



Antiviral Medication



Antiviral Medication



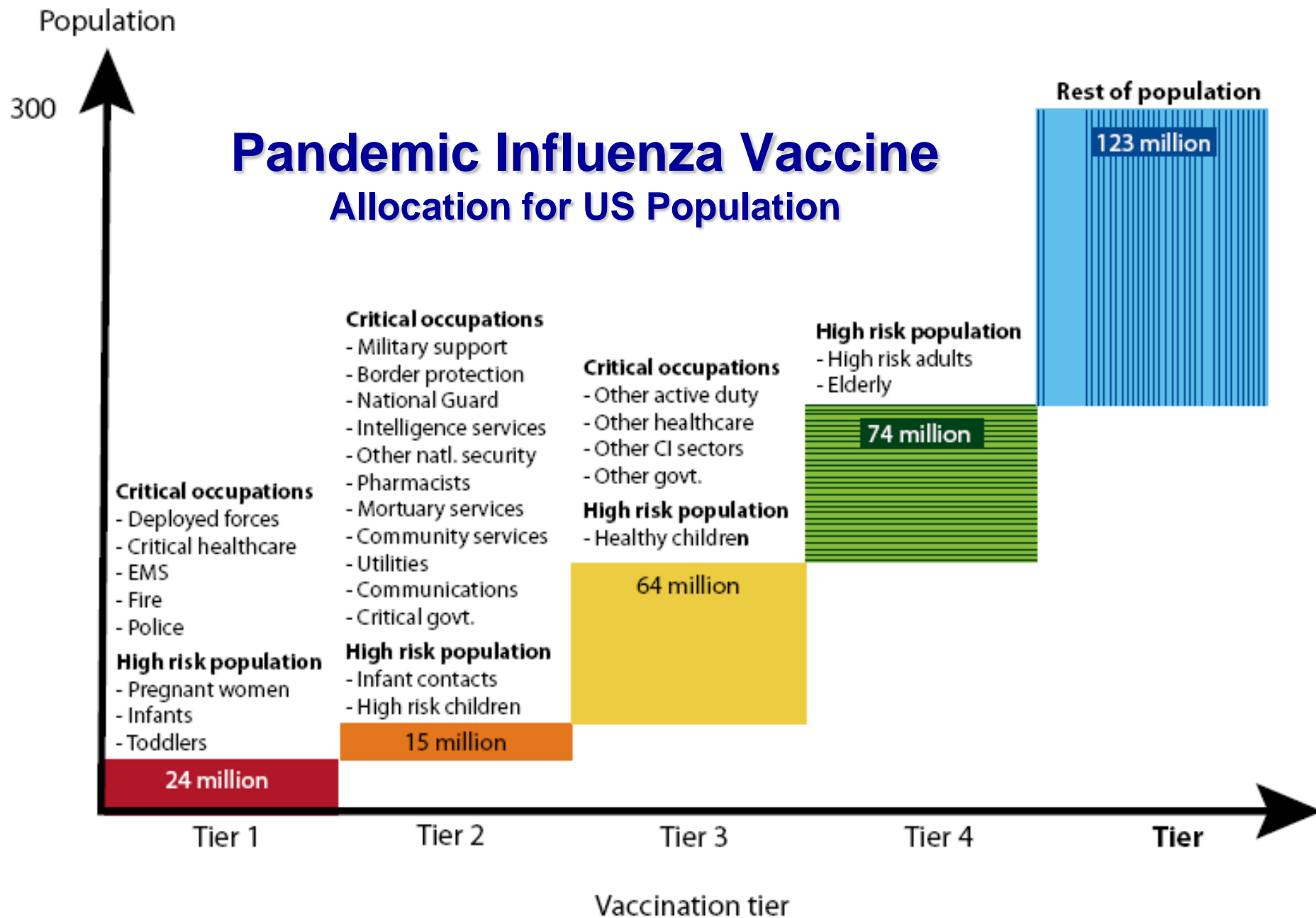
Antiviral Medication: Proposed US Government Guidance

Employers that provide frontline healthcare and emergency services should protect employees who will be exposed to ill persons during a pandemic. This guidance recommends providing *antiviral prophylaxis to those very high exposure risk and high exposure risk employees for the duration of community pandemic outbreaks.*

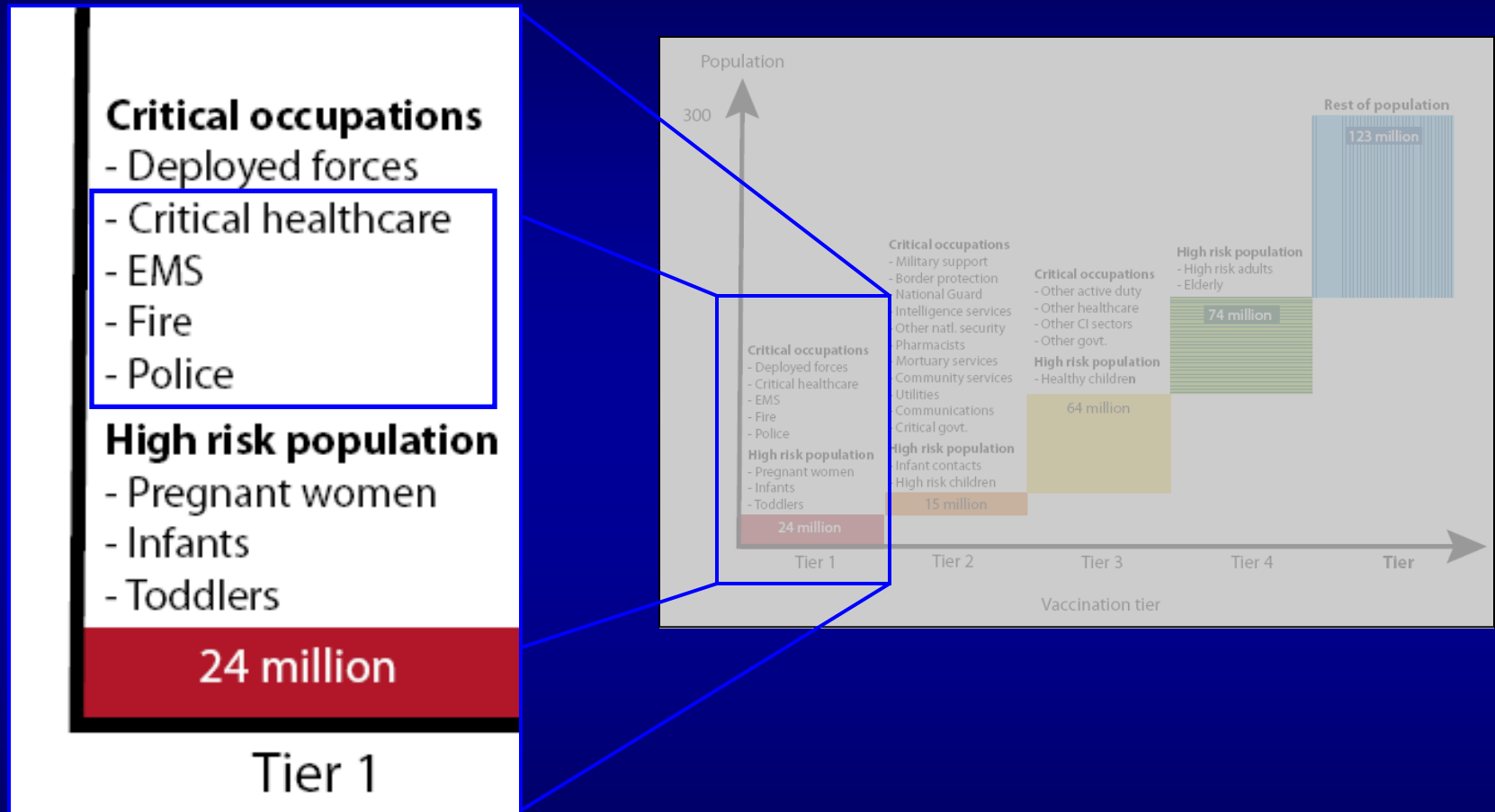


Reference: "Considerations for Antiviral Drug Stockpiling by Employers in Preparation for an Influenza Pandemic" HHS, scheduled publication Dec 16, 2008
www.pandemicflu.gov





Pandemic Influenza Vaccination Tiers



Guidance on Allocating and Targeting Pandemic influenza Vaccine, HHS, DHS 2008.
www.pandemicflu.gov



Emergency Medical Service Checklist

EMERGENCY MEDICAL SERVICE AND NON-EMERGENT (MEDICAL) TRANSPORT ORGANIZATIONS PANDEMIC INFLUENZA PLANNING CHECKLIST



Planning for pandemic influenza is critical for ensuring a sustainable health care response. The Department of Health and Human Services (HHS) and the Centers for Disease Control and Prevention (CDC) have developed the following checklist to help emergency medical services (EMS) and non-emergent (medical) transport organizations assess and improve their preparedness for responding to pandemic influenza. EMS organizations will be involved in the transport of acutely ill patients with known or suspected pandemic influenza to emergency departments; some of these patients might require mechanical ventilation for life support and/or other lifesaving interventions. Non-emergent (medical) transport organizations will be called upon to transport recovering pandemic influenza patients to their home, residential care facility, or possibly to alternate care sites set up by state or local health departments. This checklist is modeled after one included in the HHS Pandemic Influenza Plan (www.hhs.gov/pandemicflu/plan/sup3.html#app2). The list is comprehensive but not complete; each organization will have unique and unanticipated concerns that also will need to be addressed as part of a pandemic planning exercise. Also, some items on the checklist might not be applicable to all organizations. Collaborations among hospital, public health and public safety personnel are encouraged for the overall safety and care of the public. Further information can be found at www.pandemicflu.gov.

This checklist identifies key areas for pandemic influenza planning. EMS and non-emergent (medical) transport organizations can use this tool to self-assess and identify the strengths and weakness of current planning. Links to websites with information are provided throughout the document. However, actively seeking information that is available locally or at the state level will be necessary to complete the development of the plan. Also, for some elements of the plan (e.g., education and training programs), information may not be immediately available and monitoring of selected websites for new and updated information will be necessary.

1. Structure for planning and decision making.

Completed	In Progress	Not Started	
<input type="checkbox"/>	<input type="checkbox"/>	<input type="checkbox"/>	Pandemic influenza has been incorporated into emergency management planning and exercises for the organization.
<input type="checkbox"/>	<input type="checkbox"/>	<input type="checkbox"/>	A planning committee ¹ has been created to specifically address pandemic influenza preparedness.
<input type="checkbox"/>	<input type="checkbox"/>	<input type="checkbox"/>	A person has been assigned responsibility for coordinating pandemic influenza preparedness planning (hereafter referred to as the pandemic response coordinator) for the organization. (Insert name, title, and contact information.)
<input type="checkbox"/>	<input type="checkbox"/>	<input type="checkbox"/>	Members of the planning committee include the following: (Insert below or attach a list with name title and contact information for each.)
			<input type="checkbox"/> Administration: _____
			<input type="checkbox"/> Medical staff: _____



Toby L Merlin, MD
Deputy Director, Influenza Coordination Unit
US Centers for Disease Control and Prevention

001 404 639 2293
tmerlin@cdc.gov



References

www.pandemicflu.gov

- Ethical Guidelines in Pandemic Influenza - Recommendations of the Ethics Subcommittee of the Advisory Committee to the Director, Centers for Disease Control and Prevention, February 2007 (www.cdc.gov)
- Guidance on Antiviral Drug Use during an Influenza Pandemic, December 2008
- Considerations for Antiviral Drug Stockpiling by Employers, December 2008
- Guidance on Allocating and Targeting Pandemic Influenza Vaccine
- Interim Guidance on Planning for the Use of Surgical Masks and Respirators in Health Care Settings during an Influenza Pandemic, October 2006
- Emergency Medical Service and Non-Emergent (Medical) Transport Organizations Pandemic Influenza Planning Checklist
- Citizen Voices on Pandemic Flu Choices: A Report of the Public Engagement Pilot Project on Pandemic Influenza
- Guidance for Preparing Workplaces for a Pandemic (<http://www.osha.gov/Publications/OSHA3327pandemic.pdf>)

